



Thorndon School Te Kura o Pipitea

An inclusive community that fosters resilient, collaborative learners and creators.

Information Pack

2026





VISION STATEMENT

An inclusive community that fosters resilient, collaborative learners and creators.

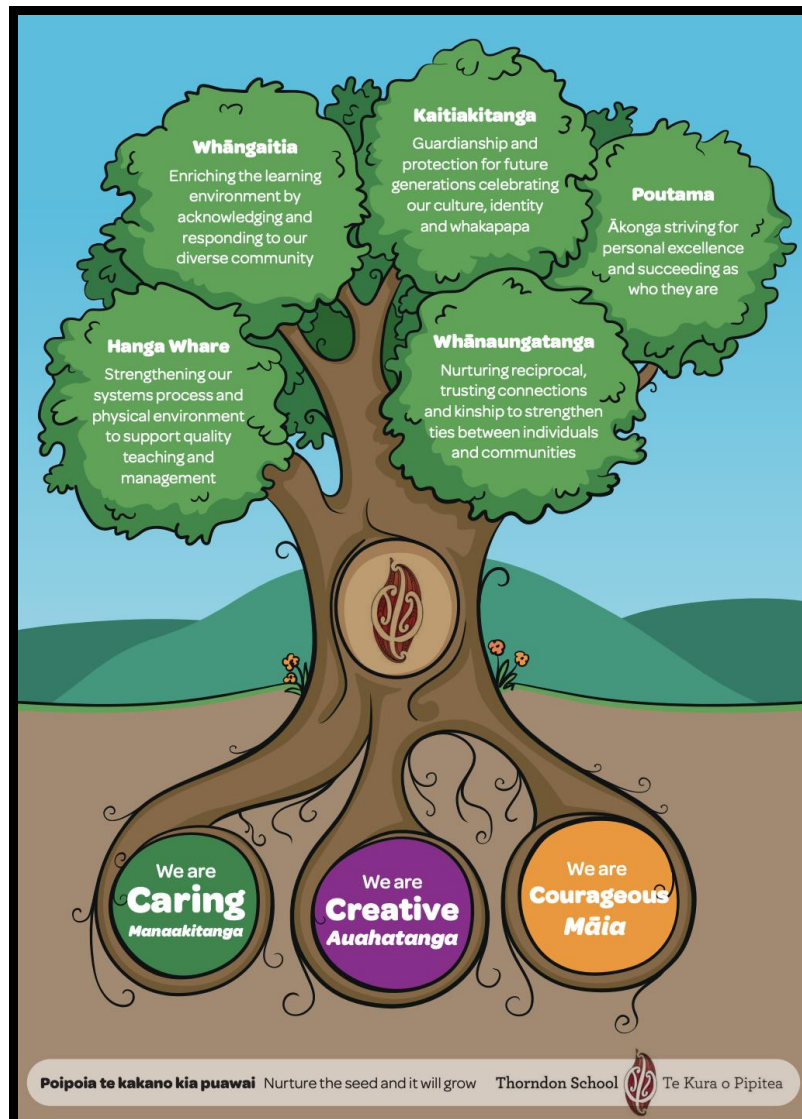
VALUES

Our values play a vital role in shaping the ethos and identity at Thorndon School, guiding behaviour, and promoting a positive learning environment for all members of our community. The values for Thorndon School are:

Manaakitanga (caring) - inclusive, respectful and empathetic.

Maia (courageous) – determined, independent, and resilient.

Auahatanga (creative) - curious, innovative and open-minded





TREATY OF WAITANGI STATEMENT

We are committed to the principles of the Treaty of Waitangi – partnership, protection, and participation – and recognise the unique status of Maori as tangata whenua within an increasingly diverse Aotearoa New Zealand.

This means:

- We will support the development of a culturally competent teaching staff.
- We will partner with whanau to improve and enrich the educational experiences and outcomes of our students.
- We will respect and promote te reo me nga tikanga Maori.
- We will recognise the role of mana whenua in the Pipitea area.



Thorndon Primary is a medium-sized inner city school with a long history, having been first established as a church school in 1852. Since then the school and the surrounding area have been through many changes. In the early part of last century Thorndon was the largest school in the city, and for a while housed the Teachers Training College. By the early 1990s the roll was down to under 100 but steady growth since then has meant that in 2002 an enrolment scheme had to be put in place to manage the roll. Demand for places in the school continues to grow.

In 2011 Kimi Ora School, across the road on Turnbull Street, was relocated and we were provided with that site. Consequently, we have increased our footprint which has provided additional space for our growing student population to spread out to learn and play. In 2012 we took over the GSE building on Hobson Crescent and redeveloped it as a classroom for our new entrants.

In spite of its relatively small size the school enjoys good facilities, with two small grassed playing fields and a sealed netball/basketball court. During the summer the children swim at Thorndon Pool. In 1999 a hall was donated to the school and moved onto our field. While this reduced play space, the benefits of having a hall far outweighed any negatives. This hall, the Old St Paul's Schoolroom, has some historic links with the school, having been moved here from the original school site in Kate Shepherd Place. It is also, reputedly, the setting for the Katherine Mansfield short story, "Her First Ball".

Over the period from 2017 to 2019, the school was completely rebuilt on account of the impact of leaky cladding from a previous development. At this time the opportunity was taken to reconsider the way in which teaching and learning are delivered. The decision was made to rebuild the school using a 'learning studio' based approach. From a school of twelve classes, Thorndon/Te Kura o Pipitea became a school of four studios: Te Kākano (Year 1 & 2), Te Pihinga (Year 3 & 4), Te Māhuri (Year 5 & 6) and Te Kōhure (Year 7 & 8).

These large, flexible spaces are designed for collaborative teaching and learning. Three teachers work together within each studio as a team, taking responsibility for the learning of a proportionately larger group of students.



One of the major resources for the school is the city itself, and we are within walking distance of such places as Parliament, the City Library, the waterfront, theatres, the Michael Fowler Centre, the National Library and, for older children, Te Papa. Many other places of interest can be reached with a short ride by public transport. Groups of children occasionally attend lunchtime concerts at Old St Pauls and St Andrews on the Terrace as well as going to view exhibitions at the City Gallery and at Te Papa. The school is also within easy walking distance of the Railway Station and the bus terminal.



ORGANISATION

The school is organised into four teams.

1. Tui (Year 1/2)
2. Kereru (Year 3/4)
3. Kakapo (Year 5/6)
4. Kea (Year 7/8)

Most teams have three teachers; one team leader and two other teachers. All teachers are responsible for the assessment and planning for and teaching of all the students in their team. Each child however, will be allocated a specific 'pastoral care' teacher who is the "go to" person for any parent concerns.

If you have a concern about your child's learning or wellbeing, the pastoral care teacher is the first person you should contact. If this does not resolve the situation, please contact the team leader.

The new studio spaces also have their own names, gifted to us by our Maori whanau. The names of these spaces are:

Te Kākano (Seed) Year 1/2 studio;
Te Pihinga (Young Plant) Year 3/4 studio;
Te Māhuri (Young Tree, Sapling) Year 5/6 studio; and
Te Kōhure (Mature Tree) Year 7/8 studio.

**LOCATION**

The school is situated in the heart of Wellington, within easy walking distance of the railway station and the bus terminal, close to many Government offices and near the motorway. Many of our parents work in the central Wellington area.

SIZE

The school is still small enough to be a place where everyone can know everyone else and a family atmosphere can be developed. This is something we work hard to maintain.

AFTER SCHOOL CARE

Kelly Club is available daily within the school grounds between the hours of 3:00pm and 6:00pm at a very reasonable cost. Holiday programmes are run from the school.

MULTI CULTURAL

The school population is varied with about 6% Maori, 6% Pasifika, 45% Asian, 39% European and about 4% from other ethnic and cultural groups.

FULL PRIMARY

Many parents see full primary schools, which go up to Year 8, as an attractive alternative to Intermediate schools.



GENERAL INFORMATION

At Thorndon School we value our diverse community. Our students and their families are culturally, ethnically, socio-economically and educationally diverse. This has not hindered the development of a close relationship between the school and its client group. We enjoy a very supportive parent community. Maintaining and building on this will continue to be an area of focus.

We try to hold a number of social events during the year, involving parents, staff and children. This has become a little more difficult in recent years as numbers have increased but we intend to persevere. These events are an opportunity for parents and staff to meet socially and in the past few years have been most successful. Early in the year we hold an informal Meet the Teacher barbecue at which parents can meet their child's new teacher.

Each year the school organises and runs the Thorndon Fair. This fair, which is one of the largest street fairs in Wellington, has become an established part of the city's calendar. It is the school's major fund raising activity and because of the size of the event we try to get all parents involved in some way.

Because the school is still relatively small it is possible for staff to know most of the children and there is a great deal of interaction among the different age groups at the school. The size of the school makes it possible to maintain a relaxed, family type of atmosphere and this is encouraged. We see ourselves as a village where everyone contributes to the wellbeing of our students.

We welcome parents into the school and encourage parent help on trips, in classrooms, in the library and with the curriculum.

Children at Thorndon are encouraged to become risk takers, to develop independent learning skills, to take responsibility for their own learning and to ask questions.

We have a strong commitment to the arts and children have many opportunities to participate in activities in the performing arts and the visual arts.

We welcome enquiries from interested parents and are happy for children and parents to visit the school.



ATTACHED UNITS AND SPECIAL PROGRAMMES

The school belongs to the Central Cluster for the Resource Teacher: Learning and Behaviour Service and is able to call on the services of specialists to help teachers meet the needs of children with moderate learning or behavioural needs.



AFTER SCHOOL/BEFORE SCHOOL CARE (KELLY CLUB)

The After School Care (Kelly Club) programme runs every school day from 3:00pm until 6:00pm. On days when the school closes early the programme generally runs from the earlier time. If this is not going to happen parents are informed. Before School Care runs from 7.00 am until 8.30 am.

The programme is OSCAR approved and parents who qualify may receive a subsidy from WINZ. Programme staff are able to advise on this.

The children are given afternoon tea and have plenty of activities and equipment to become involved with.

The programme is staffed at a ratio of 1 supervisor to 10 children.

Visit: www.kellyclub.co.nz for further information.



THORNDON SCHOOL BOARD OF TRUSTEES 2026

Brendan Eckert

email: bot@thorndonprimary.school.nz

Murray Fox

email: bot@thorndonprimary.school.nz

Simina Palu

email: bot@thorndonprimary.school.nz

Dong Phung

email: bot@thorndonprimary.school.nz

Namali Suraweera

email: bot@thorndonprimary.school.nz

Leah Reid (Staff Representative)

Wk 472 4267

email: leah@thorndonprimary.school.nz

Etuale Togia (Principal)

Wk 472 4267

email: principal@thorndonprimary.school.nz



STAFF LIST 2026

Etuale Togia	Principal
Charlotte Hills	Deputy Principal/Team Leader Kereru
Leah Reid	Assistant Principal/Team Leader Tui
Claire Stenhouse	Teacher
Chantal Keene	Teacher
Niamh Butler	Teacher
Monica Schellevis	Teacher
Tim Snell	Team Leader Kakapo
Monica Schellevis	Teacher
Ravineel Kumar	Teacher
Isaac Jerez	Team Leader Kea
Anna Vuksanlekaj	Teacher
Jane Harris	Teacher
Susie Hardie	Teacher Music (Part-Time)
Eman Zalat	Teacher ESOL
Olly Gough	Part-time Teacher
Niamh King	Part-time Teacher
Kylie Mark	Part-time Teacher
Alice van der Merwe	Part-time Teacher
Kim Millar-Hughes	Teacher Aide
Heather Tran	Teacher Aide
Hela Isaac	Office Manager
Martine Taylor	Accounts Manager
Hawkins Property Services	Groundsperson/Caretaker (Part-Time)



Term Dates 2026

Term 1

Monday, 2 February

Friday, 6 February

Thursday, 2 April

School opens (9:00 am)

School closed – Waitangi Day

Term ends (3:00 pm)

Term 2

Monday, 20 April

Monday, 27 April

Monday, 1 June

Friday, 3 July

School opens (9.00 am)

School closed – Anzac Day

School closed - King's Birthday

Term ends (3:00 pm)

Term 3

Monday, 20 July

Friday, 25 September

School opens (9.00 am)

Term ends (3:00 pm)

Term 4

Monday, 12 October

Monday, 26 October

Sunday, 6 December

Monday, 14 December

School opens (9.00 am)

School closed – Labour Day

Thorndon Fair

School Year ends (1.00 pm)